

3300 E. 1st Avenue parking at Alexan Cherry Creek



ENTRY

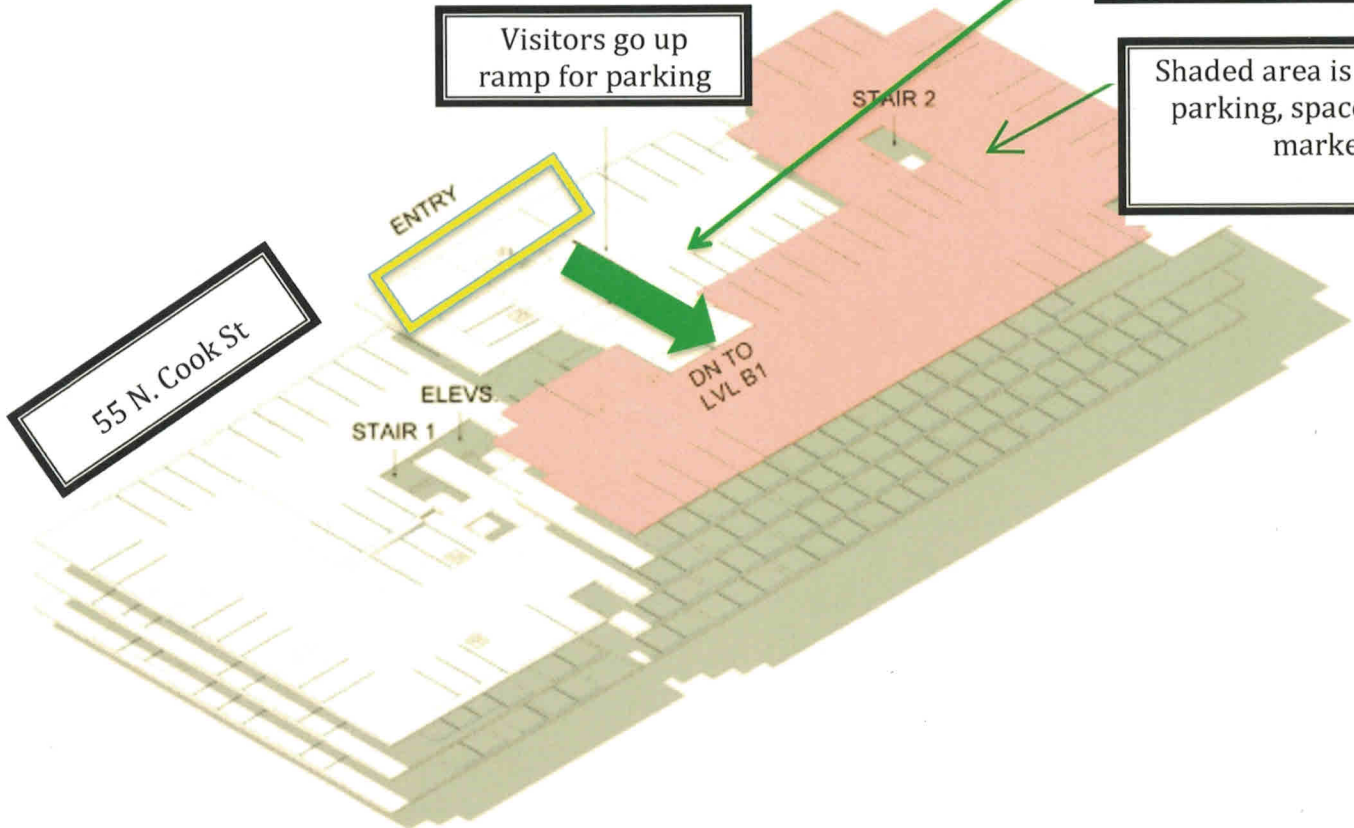
↑ Resident Visitor Parking
Office Visitor Parking
Retail Visitor Parking

← B1: Office Tenant Parking
B2: TRU>FIT ATHLETIC CLUBS
B3: Office Tenant Parking
B4: Resident Parking

Visitors will see the above directory when they pull in to the garage

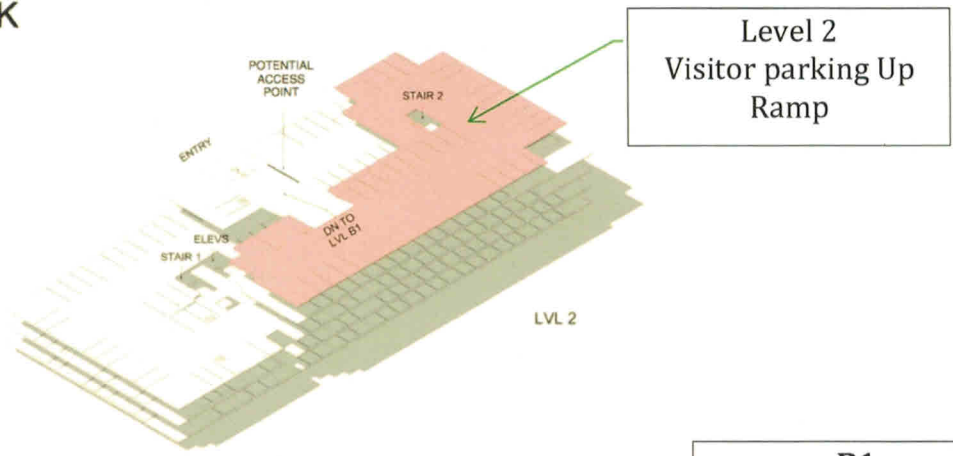
Visitors go up ramp for parking

Shaded area is for visitor parking, spaces will be marked

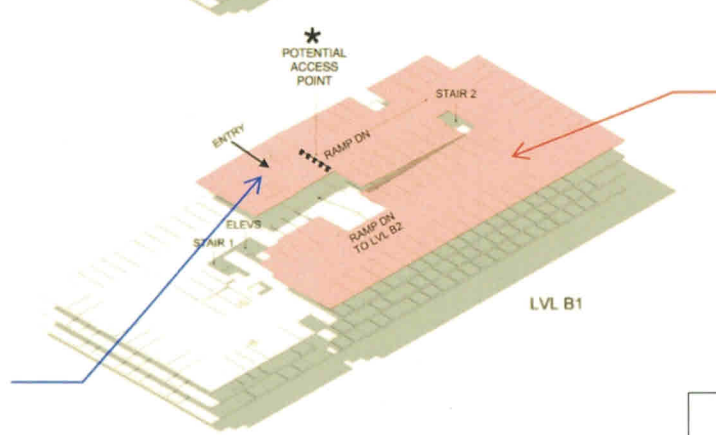


* Please also remind visitors that our west lot will still be open in addition to the new garage

ALEXAN CHERRY CREEK
 EXHIBIT C: STACKING PLAN

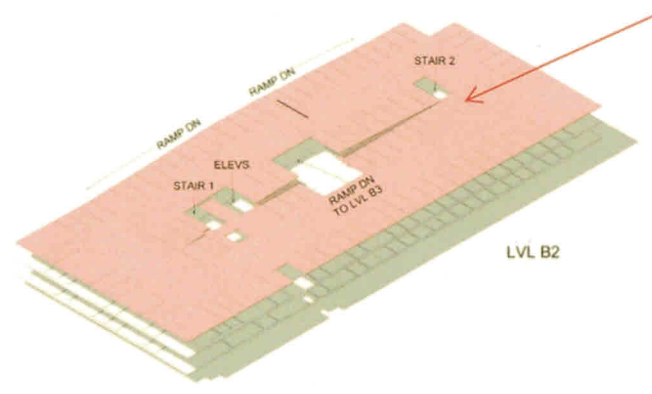


Level 2
 Visitor parking Up
 Ramp

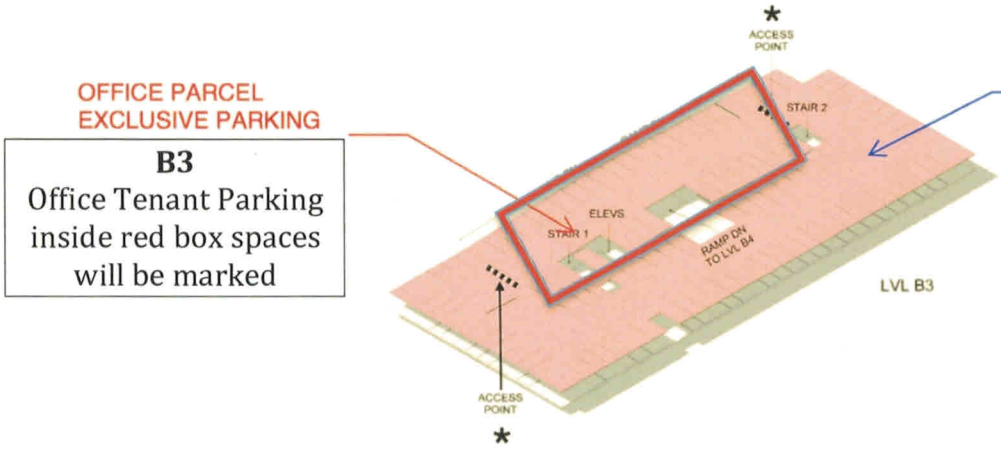


B1
 Office Tenant
 Parking

APARTMENT PARCEL
 EXCLUSIVE PARKING
 2 SPACES



B2
 Trufit Parking Level
 2 - Hour Parking Only



B3
 Office Tenant Parking
 inside red box spaces
 will be marked

APARTMENT PARCEL
 EXCLUSIVE PARKING